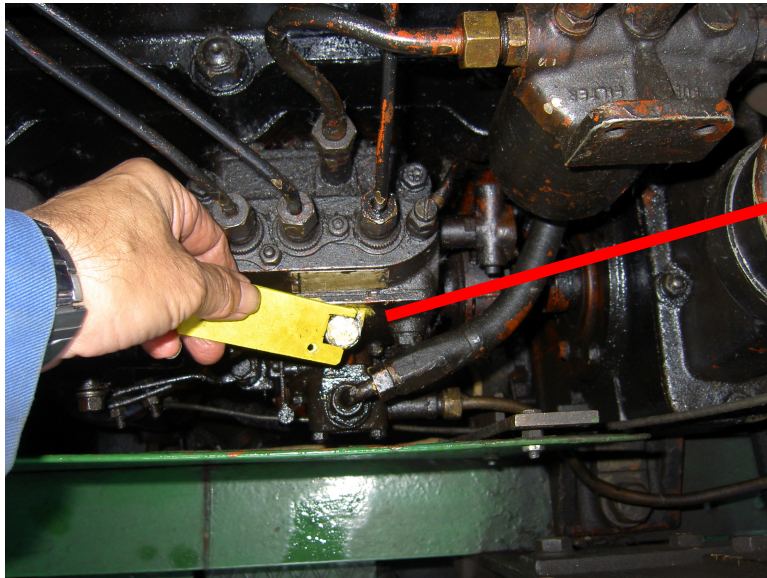


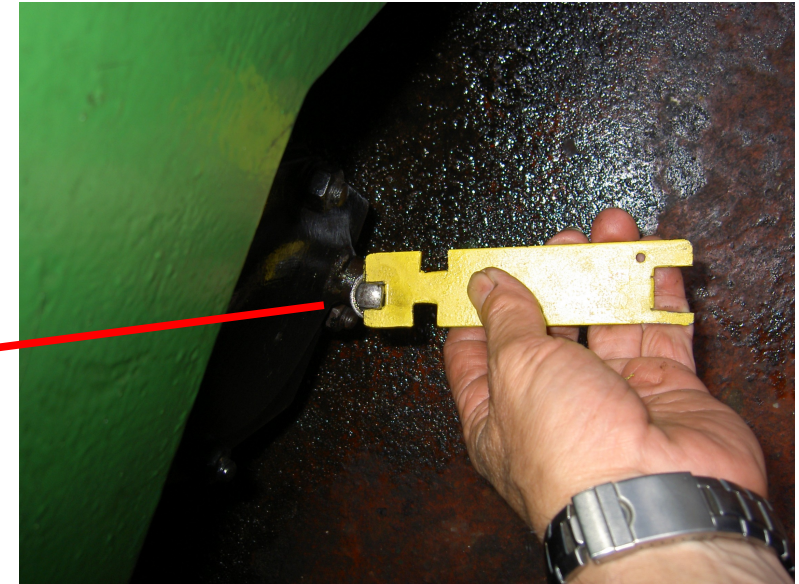
NOT TO BE REMOVED FROM LOCO

11001 daily pre-driving checks

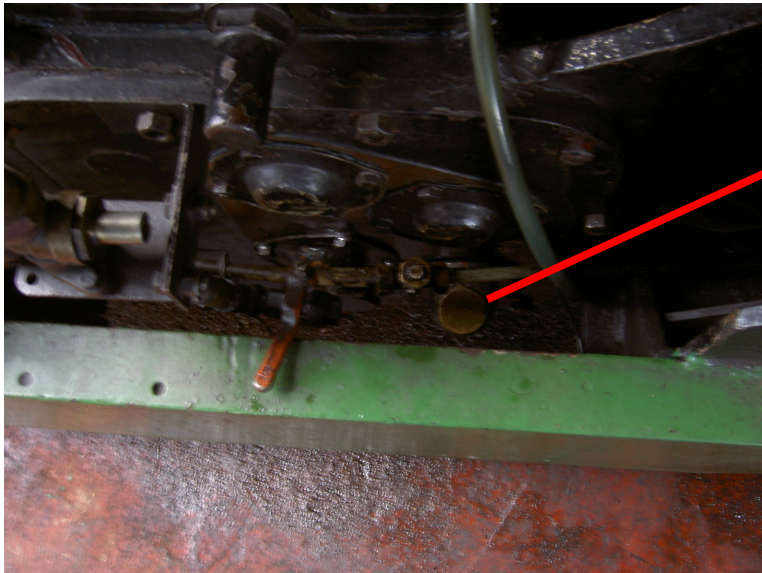


Left governor lube point. Under engine cover. 2 squirts engine oil
Do not turn air cleaner upside down when you take it off

Right axlebox lube point(4). general oil halfway up tube

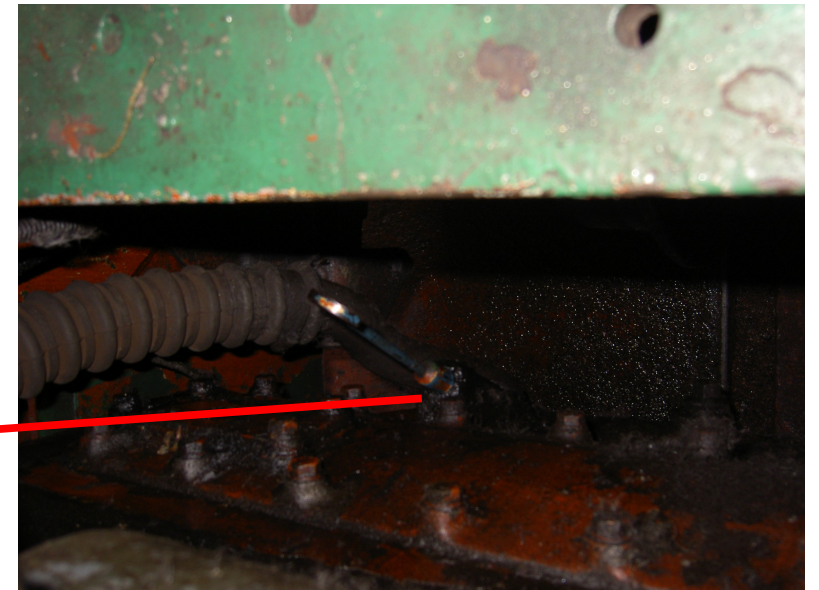


Fuel and water also need checking. Compressor may need oil if it is slow to build pressure but don't overfill.



Left gearbox filler point SAE90 HP gear oil. about halfway up tube

Right engine dipstick. In engine bay - middle of seat. oil level between the 2 marks DO NOT overfill



Gearbox Spanner hangs by steam benches. Yellow tool is in loco sandbox. Only tighten plugs just over finger tight. Do Not overfill

NOT TO BE REMOVED FROM LOCO

MOTOR RAIL SIMPLEX 11001/1956

Built 1956l; 50hp Dorman Diesel' 3 speed Gearbox

Supplied new to the London Brick Co. at their Orton Works, Yaxley near Peterborough, 11001 is a Simplex 60S class locomotive with a 50hp Dorman 3LA diesel engine, and is now known to have been the prototype for this class of locomotive. As originally constructed, it had small ballast weights fitted and was cabless. Photographs exist of the locomotive on trial at the Leighton Buzzard Light Railway. It worked at Orton until November 1971 when it was transferred to LBC's Bearts Works, Arlesey in Bedfordshire. Acquired for preservation in 1978, minus engine and gearbox, it was later rebuilt by Alan Keef of Ross-on-Wye with the engine and gearbox from another Simplex 60S and used on the reconstruction of the Glasgow underground by Taylor Woodrow, the contractors.

In 1988, the locomotive was painted in the livery of Istock Brick when they agreed to sponsor the cost of repainting. It received a second repaint in these colours in 1993. As a consequence of this sponsorship, the locomotive is usually referred to as "Istock" and is the mainstay of the passenger train working on non-steam opening days for which purpose the locomotive is fitted with emergency air braking and horn.

During 2000/2001 11001 was given a major gearbox overhaul, the brake piping was all renewed and the locomotive returned to green livery, the sponsorship from Istock Brick having ended.

DO not print this page printing/encapsulation instructions only

Colour laser print preferred

Cut off top corners along dotted lines (after printing, duh!) before encapsulating.

Trim overall to minimum margin possible before encapsulating.

After encapsulation punch hole in the area so the hole misses the paper. This will keep it watertight. It is to hang on locomotive while in shed/on display and for driver use to do pre-run check and also to supply information to the public.

Dave Bennett